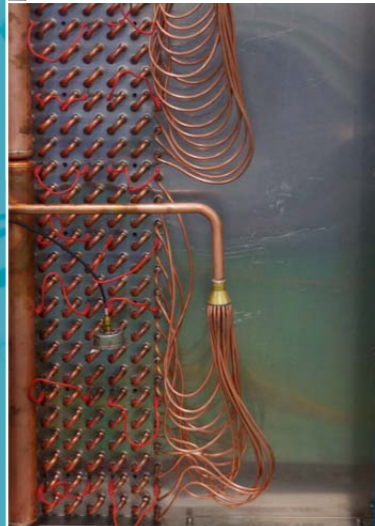


Vertical Blast Freezing Air Cooler



Supcool Refrigeration Equipment Factory

Nomenclature:

VL36.3/506A

- V :** Vertical Type Evaporator
- L :** M: -15 ~ -20°C / L: Below -25°C
- 36.3 :** Cooling Capacity (KW)
- 506 :** Fan Motor Dia. 500mm x 6pcs
- A :** 380V/50Hz/3phase

Product Description:

- ★ Very big diameter copper tube $\phi 16\text{mm}$, Max fin space up to 10mm;
- ★ Benefited from the huge heat-transfer surface we have experiment shows that weight loss during the freezing of food reduced tremendously which proves our new design limit the dehumidification perfectly;
- ★ Due to the low frosting velocity, customers could save a lot from the power consumption;
- ★ Top quality axial fan motor could make sure that you have a low noise, stable and reliable evaporator;
- ★ Galvanized steel with powder painting body is very good against corrosion, of course that stainless steel is optional;
- ★ With vertical structure, installation could be very easy.

VM Air Cooler (Fin Space 6mm)

| Model | VM36.9/504A | VM46.8/504A | VM56.1/506A | VM69.3/506A | VM50.1/554A | VM61.6/554A | VM71/556A | VM84.7/556A | VM60.5/634A | VM73.7/634A | VM89.1/636A | VM105.6/636A | |
|--|-------------|-------------|-------------|-------------|-------------|-------------|-----------|-------------|-------------|-------------|-------------|--------------|------|
| Cooling (kW) | 36.9 | 46.8 | 56.1 | 69.3 | 50.1 | 61.6 | 71 | 84.7 | 60.5 | 73.7 | 89.1 | 105.6 | |
| Heat Transfer Surface(m ²) | 210 | 280 | 300 | 400 | 260 | 350 | 350 | 460 | 300 | 400 | 450 | 600 | |
| Air Flow (m ³ /h) | 24000 | 24000 | 36000 | 36000 | 32000 | 32000 | 48000 | 48000 | 40000 | 40000 | 60000 | 60000 | |
| Air Throw (m) | 16 | 14 | 16 | 14 | 18 | 16 | 18 | 16 | 20 | 18 | 20 | 18 | |
| Input (kW) | 2 | 2 | 3 | 3 | 3 | 3 | 4.5 | 4.5 | 3.52 | 3.52 | 5.28 | 5.28 | |
| Defrost (kW) | 16.5 | 22.5 | 22 | 30 | 22 | 30 | 22 | 30 | 24 | 32 | 24 | 32 | |
| Overall Size(mm) | L | 1935 | 1935 | 2535 | 2535 | 2295 | 2295 | 2535 | 2535 | 2295 | 2295 | 3195 | 3195 |
| | W | 824 | 924 | 824 | 924 | 824 | 924 | 824 | 924 | 824 | 824 | 924 | 924 |
| | H | 1685 | 1685 | 1685 | 1685 | 1685 | 1685 | 1685 | 1685 | 1885 | 1885 | 1885 | 1885 |
| Pipe Diameter (mm) | Liquid | 22 | 22 | 28 | 28 | 22 | 28 | 28 | 28 | 2X22 | 2X22 | 2X22 | |
| | Gas | 54 | 54 | 60 | 60 | 54 | 60 | 60 | 60 | 2X54 | 2X54 | 2X60 | |
| Pipe Volume (L) | 47.6 | 63.4 | 66.1 | 88.1 | 58.7 | 78.2 | 77.2 | 103 | 67.1 | 89.4 | 98.8 | 131.8 | |

Remarks: Fin space 6mm, nominal capacity at room temp: -18°C; Evaporation Temp: -25°C, DELTA T=7°C, R448/R449A

VL Air Cooler (Fin Space 10mm)

| Model | VL18.7/504A | VL23.1/504A | VL27.5/506A | VL36.3/506A | VL25.3/554A | VL31.5/554A | VL35.2/556A | VL43.5/556A | VL30.3/634A | VL38/634A | VL45.1/636A | VL52.8/636A | |
|--|-------------|-------------|-------------|-------------|-------------|-------------|-------------|-------------|-------------|-----------|-------------|-------------|------|
| Cooling (kW) | 18.7 | 23.1 | 27.5 | 36.3 | 25.3 | 31.5 | 35.2 | 43.5 | 30.3 | 38 | 45.1 | 52.8 | |
| Heat Transfer Surface(m ²) | 130 | 170 | 185 | 245 | 165 | 215 | 215 | 290 | 185 | 245 | 280 | 370 | |
| Air Flow (m ³ /h) | 24000 | 24000 | 36000 | 36000 | 32000 | 32000 | 48000 | 48000 | 40000 | 40000 | 60000 | 60000 | |
| Air Throw (m) | 16 | 14 | 16 | 14 | 18 | 16 | 18 | 16 | 20 | 18 | 20 | 18 | |
| Input (kW) | 2 | 2 | 3 | 3 | 3 | 3 | 4.5 | 4.5 | 3.52 | 3.52 | 5.28 | 5.28 | |
| Defrost (kW) | 16.5 | 22.5 | 22 | 30 | 22 | 30 | 22 | 30 | 24 | 32 | 24 | 32 | |
| Overall Size(mm) | L | 1935 | 1935 | 2535 | 2535 | 2295 | 2295 | 2535 | 2535 | 2295 | 2295 | 3195 | 3195 |
| | W | 824 | 924 | 824 | 924 | 824 | 924 | 824 | 924 | 824 | 824 | 924 | 924 |
| | H | 1685 | 1685 | 1685 | 1685 | 1685 | 1685 | 1685 | 1685 | 1885 | 1885 | 1885 | 1885 |
| Pipe Diameter (mm) | Liquid | 22 | 22 | 28 | 28 | 22 | 28 | 28 | 28 | 2X22 | 2X22 | 2X22 | |
| | Gas | 54 | 54 | 60 | 60 | 54 | 60 | 60 | 60 | 2-54 | 2-54 | 2-60 | |
| Pipe Volume (L) | 47.6 | 63.4 | 66.1 | 88.1 | 58.7 | 78.2 | 77.2 | 103 | 67.1 | 89.4 | 98.8 | 131.8 | |

Remarks: Fin space 10mm, nominal capacity at room temp: -33°C; Evaporation Temp: -40°C, DELTA T=7°C, R448/R449A